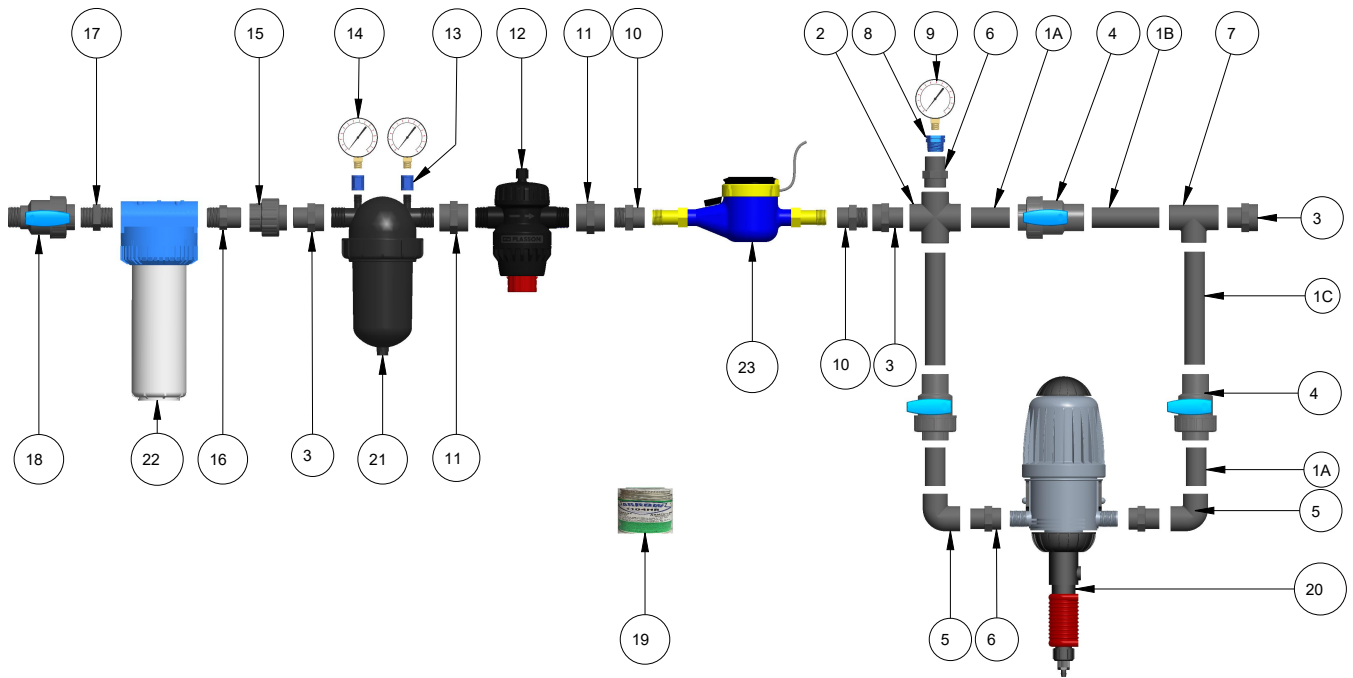


# 02205199

## WATER CONTROL PANEL 32MM WITH SOFTENER COM.



NO.	Cat No.	ITEM	QTY.
1 (A,B,C)	15000033	32mm PVC pipe - supplied in pieces of 600mm (see table below for cutting lengths)	2
2	054400032	CROSS 32 CEMENT PVC	1
3	050302032010	ADAPTOR SOCKET M.F. 32-1" CEM-THR	3
4	11350032	1/NUT VALVE CEM. PVC 32	3
5	050500032	90 ° ELBOW-CEMENT PVC 32	2
6	050202032007	REDUCER THR-CEM PVC 32(25)3/4"F	3
7	050400032	TEE-CEMENT PVC 32	1
8	02209076	BUSHING 3/4" X 1/4" 12011012048	1
9	02205757	PRESSURE GAUGE 0-4.0 BAR W/ GLYCERIN	1
10	050201010005	THREADED REDUCER PVC 1"-1/2"F	2
11	050101010	THREADED SOCKET PVC 1"	2
12	02206500	UNIVERSAL PRESSURE REGULATOR (UPR550) 1" COM	1
13	02205150	THREADED SOCKET 1/4" - 12010304048	2
14	02209453	PRESSURE GAUGE 0-6 BAR	2
15	050800032	UNION+O RING-CEM PVC 32	1
16	050602032010	NIPPLE THR-CEM PVC 32(25)1"	1
17	050601010	THREADED NIPPLE PVC 1"-1"	1
18	11361010	ONE NUT VALVE MALE-FEMALE ADAPTOR 1" PVC	1
19	11AA.1104HB.2	11AA.1104HB.2 - HEAVY BODIED, FAST SETTING, CLEAR, UP TO 12 1.2PT	1

**ITEMS BELOW ARE SOLD SEPARATELY AND SHOWN FOR REFERENCE ONLY!**

20	02300010	MR MEDICATOR(2512)+BYPASS 0.2-2% (2802020B112)	1
21	02209079	ARKAL DISK FILTER 1" 120 MESH (012001-000077)	1
22	02300002	SILIPHOS SOFTENER 1"	1
23	02209520	WATER METER 1/2" ELEC.OUTPUT 1L/H	1
OR	02209519	WATER METER 1" W/ELECT.OUT 1L BSP	

Note:  
When installing 1" Water Meter, the two Threaded Reducers (part No. 10) are redundant.

In order to reach layout configuration as shown, PVC pipes No. 1 (A, B, C) have to be cut in lengths as follows:

Item	Qty	Length
1A	3	60 mm
1B	1	105 mm
1C	2	175 mm

# 02205199

## WATER CONTROL PANEL 32MM WITH SOFTENER COM. PART LIST



050602032010 X 1



050302032010 X 3



050202032007 X 3



050201010005 X 2



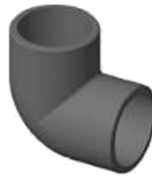
054400032 X 1



050800032 X 1



050601010 X 1



050500032 X 2



050400032 X 1



050101010 X 2



15000033 X 2



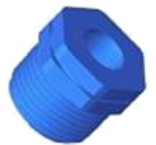
11361010 X 1



11350032 X 3



02209453 X 2



02209076 X 1



02206500 X 1



02205757 X 1



02205150 X 2



11AA.1104HB.2 X 1