

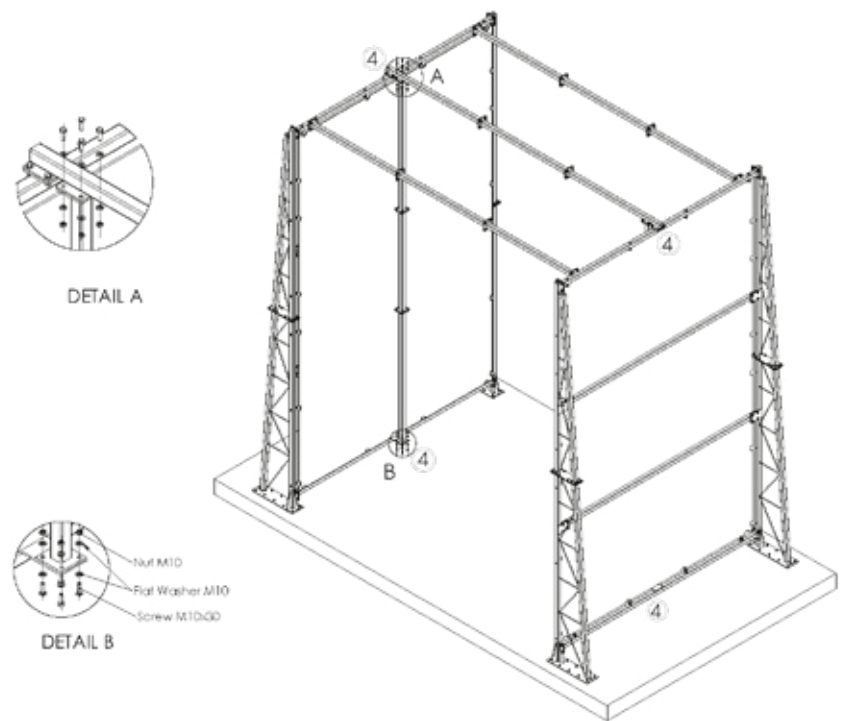
DISINFECTION GATE WIND SHIELD



- **WATER CONSUMPTION:** from 30 l/min up to 110l/min
- Chemical solution consumption (water + chemicals) 15l-35l/track
- **DISINFECTION TIME:** 15-25 sek/ truck
- **CONSTRUCTION FRAME:** powder coated steel
- **DISINFECTION FRAME:** powder coated aluminum
- **SIDE WALLS:** tarpaulin PVC
- Stainless or PVC spraying system
- 9 nozzles undercarriage spraying system
- Equipped with a 230V or 400V powered pump
- Automatic chemical dilution
- 40 - 48 pcs spray nozzles, different types
- 25m hose for spraying in inaccessible spots
- **REMOTE CONTROL:** start/stop function
- **VEHICLE DETECTORS AND REMOTE CONTROLLERS:** Automatic start/stop function - Vehicle detectors and remote controllers
- **HEATING:** a heating system with built-in thermostat that starts heating when the temperature drops below 0°C
- **STORAGE:** Component Storage keeps inside pumps, chemical containers, control panel, dilution systems, etc.
- **LARGE STORAGE:** Component Storage keeps inside 600l clean water tank, pumps, chemical containers, control panel, dilution systems, etc.
- Night visibility elements
- **COLOR:** yellow or made to order
- **DIMENSION:** 500cm x 400cm x 300cm (can be made with any size)

Draft shield for Disinfection Gate

Creates protection which improves the quality of disinfection. During high wind, intensity ensures even distribution of the disinfectant on the surface and gives greater control over the amount of applied agent, easier control of applied disinfection solution when calculated per m² of the disinfected vehicle. Reduces the probability of water mist passing outside the disinfection area.



CHEMICAL DILUTION RATE

Tip No.	1	2	3	4	5	6	7	8	9	10	11	No Tip	
% solution	0,3	0,5	0,8	1	1,3	1,5	1,5	2	2,5	3	5	7	14